



A&A  
Towers  
EKO ATLANTIC















# Development & Specifications

Every element of the A&A Towers has been meticulously planned to create the living space of your dream. The common areas feature generous spaces particularly in high traffic spots, like the parking lot, corridors, hallways and elevators. There is a standby maintenance team that offers round the clock upkeep to keep A&A Tower's common areas in perfect condition. Our maintenance team is always reachable 24/7 to serve you. Some of these common areas include:

The Swimming pool

Landscaped paths and sitting areas

Gym

In addition to living in the newest prime area of Lagos, residents will enjoy first class infrastructure facilities, including uninterrupted power, water, and security services. Overview of facilities/services provided:



24 hours electricity



IPTV (Internet Protocol Television System)



24 hours security



Video Phone System



24 hours janitorial/  
concierge services



Home automation system



Intrusion alert system



E-tag system for vehicle  
entry/exit



Satellite and Master  
Antennae

Dedicated lifts with specific ID  
systems for penthouses

Ducting provision for Telecommunications

Ventilation, Mechanical Ventilation  
for all basements

Lightning Protection

Fire Detector System



## BATHROOM

---

High-end contemporary vitrified ceramic-granite floor tiles and ceramic-granite wall tiles.

Contemporary sanitary ware with stainless steel mixer taps.

Wall-mounted WC.

Walk-in showers with glass shower screens & wall mounted chrome rain showerheads.

---

## KITCHEN

---

Modern style open or enclosed kitchen (Client's choice).

High-gloss finished cabinetry, soft closing drawers and doors with tiled backsplash.

Integrated extractor fan, cooker hob and oven with washing machine connections.

---

## ELECTRICAL & COMMUNICATION

---

Video phone access control system.

Hidden access pipes and wiring for cable TV and internet.

Loop-through TV points to all rooms.

## FINISHES

---

Ceramic-granite floor tiles. (Upgrade option of treated hardwood or marble flooring available).

Floor to ceiling aluminum/opvc double glazed 8mm heat reducing tinted windows fixed and sliding.

High-quality Solid core Monobloc MDF door panels.

Suspended ceilings with recessed LED lighting and concealed cooling vents.

---

## HEATING & VENTILATION

---

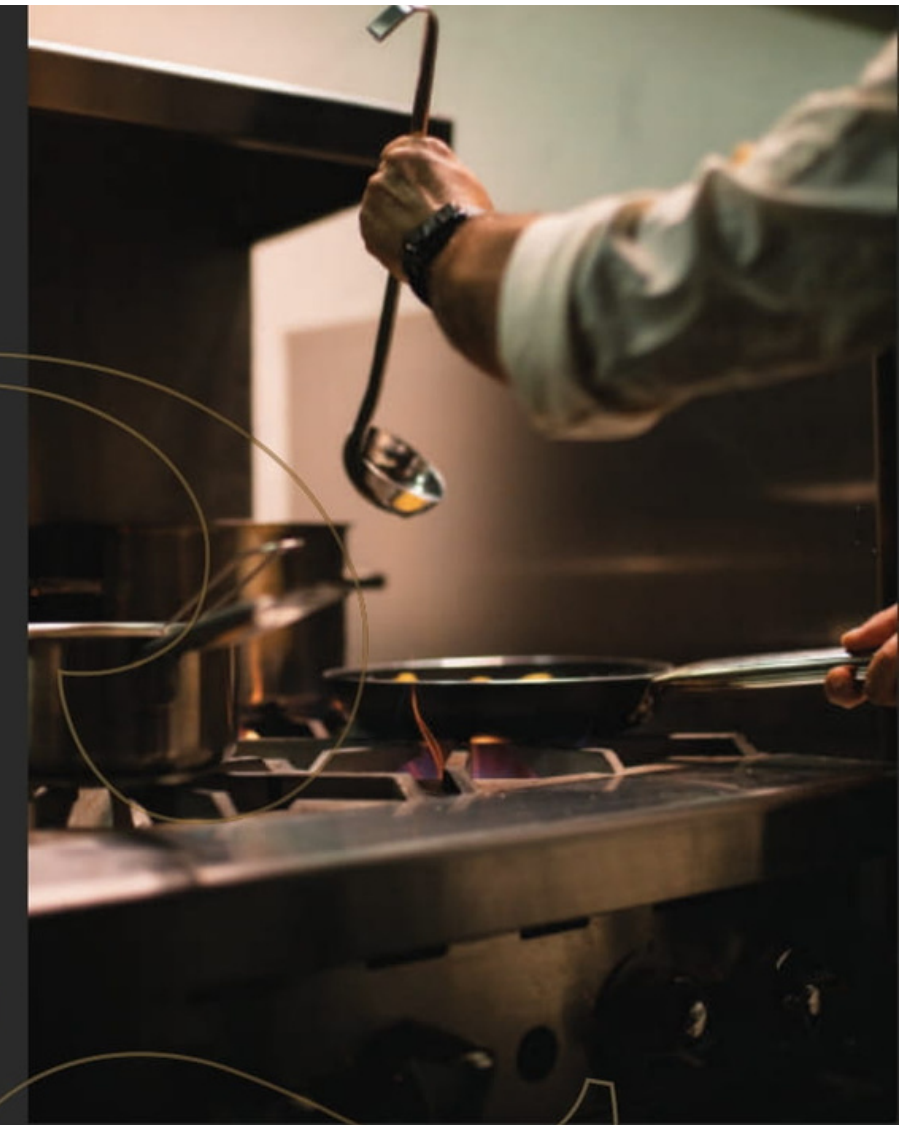
Energy-efficient VRV HVAC cooling system controlled by zoned and remote controls.

Smart building design to control all systems even from outside by your phone.



# Restaurant & Bar

Explore the art of cuisine as it is practiced with complexity and panache with classic and innovative dishes fused with unrivalled service and hospitality at A&A Towers. Have a taste of regional food and drinks within the building. Enjoy the luxury and comfort of our millennial services helping you chew on and gulp down only the best and satisfying meals.



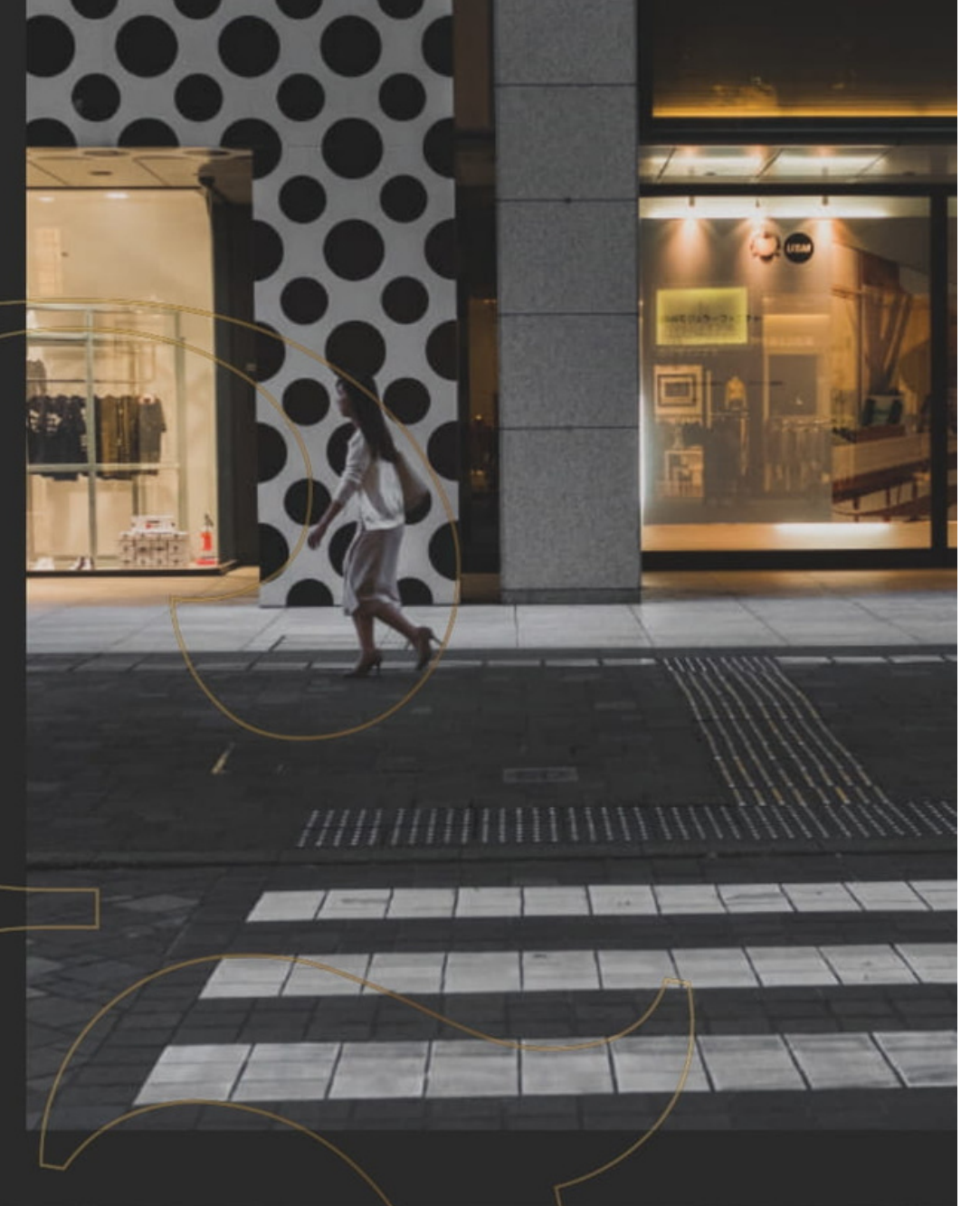


# Retail Spaces

Because we know you would want to get some items quickly and painlessly, we have a retailer service, that is very reliable and accessible. Get anything for stationery to personal items easily at reasonable prices. A&A Towers will also offer a mix of trendy upscale shopping options right at your doorstep.

# Office Spaces

A&A Towers provides high-quality office space, allowing tenants to work in a productive and sophisticated setting. All office spaces are immaculately presented and equipped with 24-hour security and CCTV cameras as well as providing state of the art communication tools, high speed internet connection and individually controlled central air-condition system.





# Health & Fitness

Health is indeed the basic ground for wealth. We want to make sure you are healthy and fit throughout your stay at A&A Towers by providing you with suitable facilities for workout. For a fresh and energetic start to the day, workout with a wide selection of modern equipments at our health center or pamper yourself and get some time to relax from a stressful day at our sauna - steam rooms.





# Car Parking Spaces

The parking spots are distributed between the basement floors to the fourth floor. Each apartment will have a minimum of 2 parking spots. In addition, 30% of the allocated parking spots are specially dedicated for visitors.

Car parking spots are also provided for occupants of the office spaces.





# Other Facilities

## Concierge

The airy light-filled lobby will have a welcoming concierge to help homeowners at any time of the day or night or guide visitors to apartments, our concierge desk is available to take care of your EVERY need 24/7 in a timely and orderly fashion. Make your bookings, arrange for spa services, and get other services coordinated on the go. The service takes the stress out and brings in effectiveness at the same time. The concierge would also provide personalized service for any special need or requests. This includes assistance with transportation, city tours, flower deliveries, restaurant reservations and a lot more.

## Spa

Take a minute to enjoy yourself and give your body exactly what it needs. Leave behind the pressures of everyday life and enter a world where time stands still and relaxation pervades. Balance your mind and soul.

## The Outdoor Terrace

Located on the 5th floor the podium terrace features a 60-foot swimming pool, sundeck, and cabanas featuring poolside food and beverage service. Residents can enjoy the impressive outdoor swimming pool or relax on the spacious terrace.





# Overview

Welcome to one of Eko Atlantic's most amazing structures. A&A Towers is a new premium apartment complex in the Eko Atlantic's Ocean Front District. It is centrally positioned in the city, allowing for easy access to all regions of Eko Atlantic. A&A Towers features modern, spacious apartments as well as cafés, restaurants, and recreational amenities.

A&A Towers is part of a long-term plan to build exceptional houses that are appropriate of this spectacular location in a world-class city. It's a reinterpretation of top-tier city living, a crossroads where sass and innovation meet in the middle.



*“A stone’s throw away from the Atlantic Ocean”*



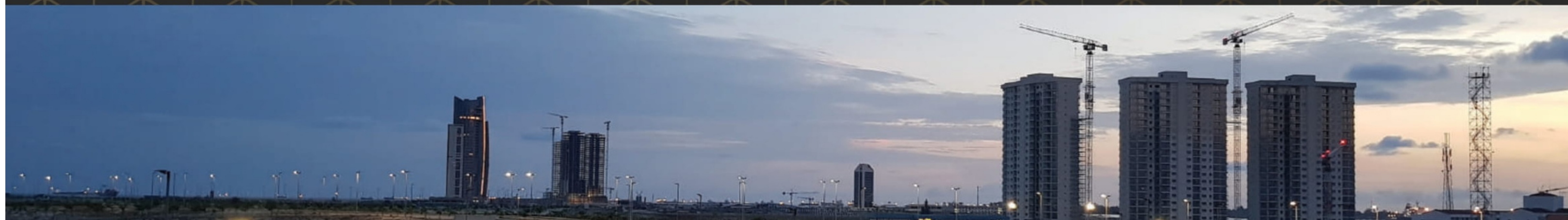
# Location

## The Oceanfront District

Within this innovative new metropolis, the elite Oceanfront District is one of 10 expertly created residential and business zones. The Oceanfront neighborhood, located near Eko Atlantic's commercial sector and Lagos' new financial center, offers fashionable and premium seaside living with a multitude of amenities in a curated, smart community. The Oceanfront District offers city living at its finest, with its opulent yacht club, modern shopping mall, and lovely pedestrianized promenade with boutiques, cafes, bars, and restaurants, as well as a bustling piazza.

## A Cosmopolitan Lifestyle

The Oceanfront District within Eko Atlantic offers an unrivaled living experience with its stunning harbor-side restaurants, yachts, great stores, and magnificent promenade. A&A Towers offers distinctive waterfront living in the midst of this lovely, cosmopolitan area. The project is a stunning example of modern architecture that captures the glitz and glam of its cosmopolitan host city.





A&A Towers designed by the renowned Turkish architect Atilla Ilhan; is an exciting development by Arkland Properties & Investment Co. Ltd. Throughout its entire cycle, A&A Towers will be an environmentally responsible and resource efficient construction. It will have a good impact on the environment and its residents in terms of design, building, operation, maintenance, and renovation.

A&A Towers will include 98 units, including 1,2- and 3-bedroom apartments and very high-end furnishings. With its majestic facade, gorgeous architecture, attractive landscape, and fantastic vistas, this is a genuinely remarkable location to call home.

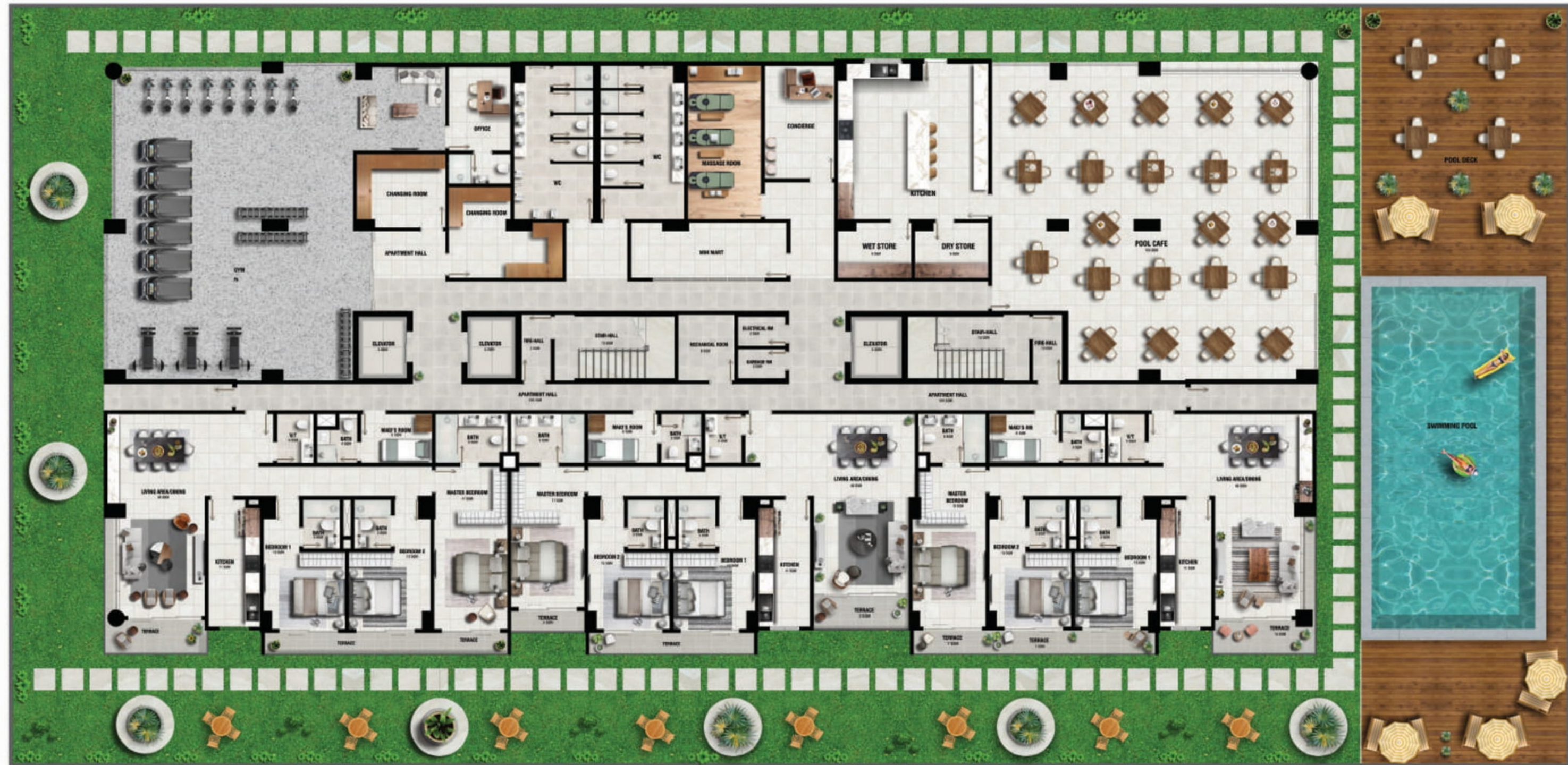
A&A Towers is a combination of lush environment and cutting-edge construction science for the world class standard, sharing in the peacefulness of important trends. A&A Towers could not sit more eminently anyplace else, thanks to the dynamic combination of culture, class, and technology.



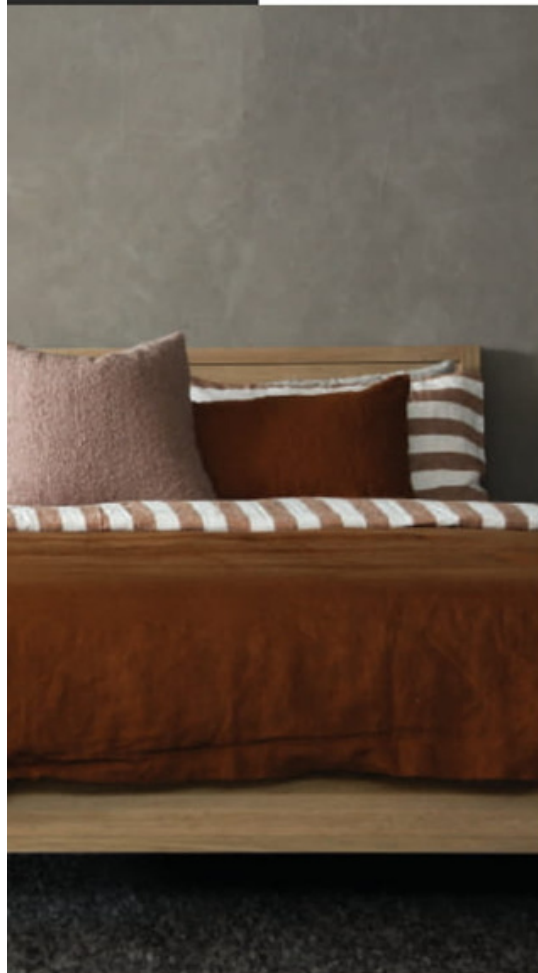


# The Podium

The Podium will offer approximately 800 square meters of thoroughly curated luxury amenities spread across the 5th Floor providing a unique experience complemented by five-star service.







### Pent Floor - Type A

Total Floor Area 245sqm

Living Room	84 sqm
Kitchen	15 sqm
Bedroom 1	24 sqm
Bedroom 2	18 sqm
Bedroom 3	22 sqm
Bedroom 4	39 sqm
Maid's Room	8 sqm
Conveniences	33 sqm
Kitchen Lobby	38 sqm

### Pent Floor - Type B

Total Floor Area 245sqm

Living Room	81 sqm
Kitchen	13 sqm
Bedroom 1	10 sqm
Bedroom 2	13 sqm
Bedroom 3	20 sqm
Bedroom 4	14 sqm
Bedroom 5	22 sqm
Maid's Room	10 sqm
Conveniences	30 sqm
Kitchen Lobby	32 sqm

### Pent Floor - Type C

Total Floor Area 245sqm

Living Room	77 sqm
Kitchen	14 sqm
Bedroom 1	10 sqm
Bedroom 2	13 sqm
Bedroom 3	13 sqm
Bedroom 4	20 sqm
Bedroom 5	38 sqm
Maid's Room	10 sqm
Conveniences	28 sqm
Kitchen Lobby	33 sqm
Family Lounge	18 sqm

### Pent Floor - Type D

Total Floor Area 265sqm

Living Room	71 sqm
Kitchen	10 sqm
Bedroom 1	10 sqm
Bedroom 2	10 sqm
Bedroom 3	14 sqm
Bedroom 4	22 sqm
Bedroom 5	11 sqm
Bedroom 6	21 sqm
Maid's Room	10 sqm
Conveniences	32 sqm
Kitchen Lobby	43 sqm
Family Lounge	11 sqm





# Penthouse

The stunning penthouse of A&A Towers is a gem on the island, offering a really luxurious experience. These suites are a true treasure for those seeking the ultimate in luxury at Eko Atlantic. To provide an even better and richer home experience, these apartments include a large bright living room and dining area. The penthouse sits on the 19th and 20th floors, providing spectacular views of the Atlantic Ocean and Atlantic City. The spectacular penthouse crowns the A&A Tower with its panoramic outlook and lovely deck.

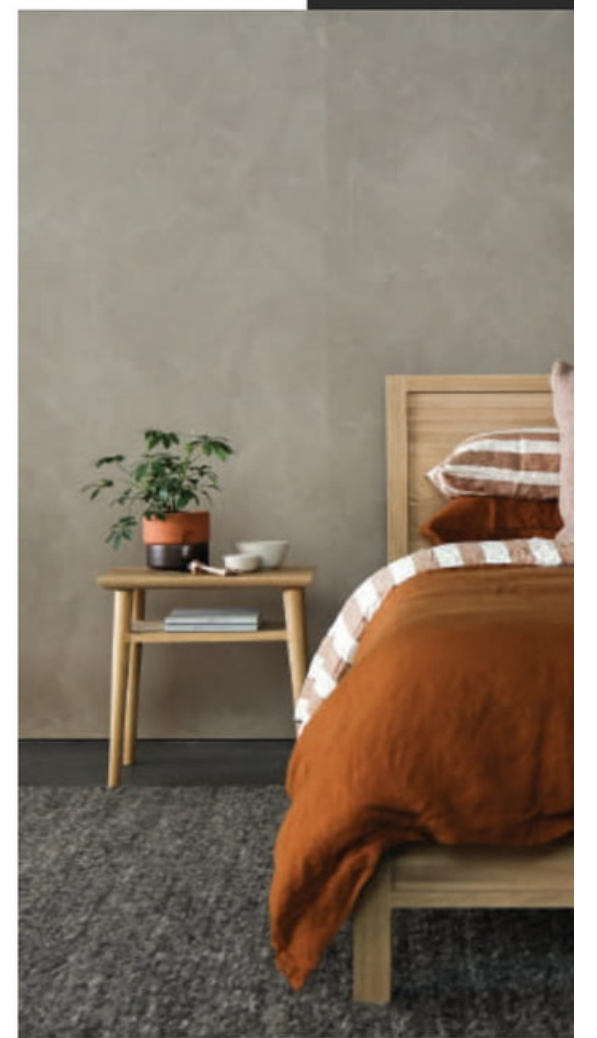
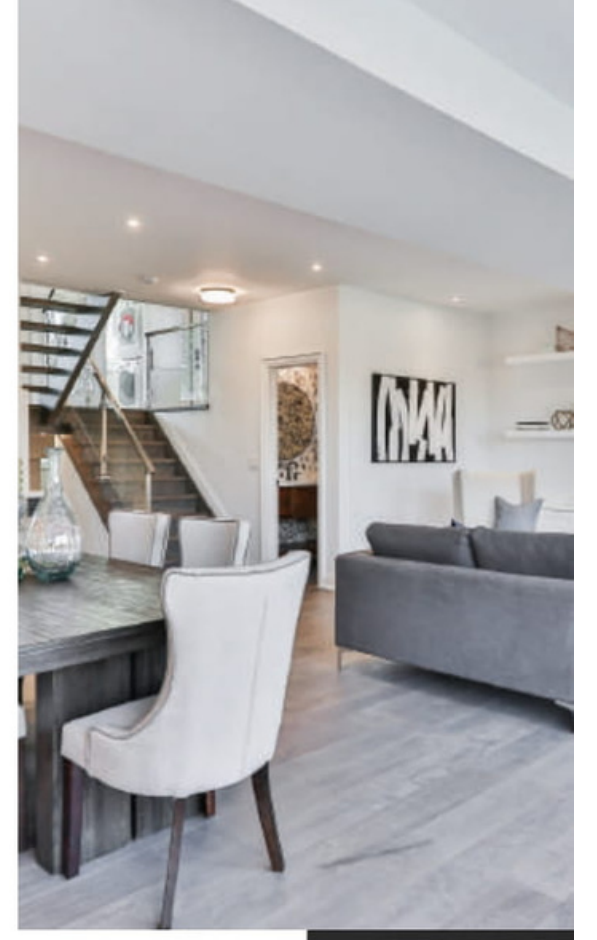
Type D

Type A



Type C

Type B







**A103**  
Three Bedroom Apartment - Type A

Footprint 168sqm

Living room & Dining	51sqm	Maid's room	7sqm
Kitchen	13sqm	Bath	4sqm
Bedroom 1	15sqm	Bedroom 2	15sqm
Bath	4sqm	Bath	4sqm
Visitor's Toilet	4sqm	Bedroom 3	20sqm
Terrace	24sqm	Bath	7sqm



**A104**  
Three Bedroom Apartment - Type D

Footprint 163sqm

Living room & Dining	51sqm	Maid's room	8sqm
Kitchen	11sqm	Bath	4sqm
Bedroom 1	14sqm	Bedroom 2	14sqm
Bath	5sqm	Bath	5sqm
Visitor's Toilet	4sqm	Bedroom 3	20sqm
Terrace	20sqm	Bath	7sqm





B101  
Two Bedroom Apartment - Type A

Footprint 138sqm

Living room & Dining	45sqm
Kitchenette	13sqm
Bedroom 1	18sqm
Bath	5sqm
Bedroom 2	20sqm
Bath	7sqm
Visitor's Toilet	4sqm
Maid's room	5 sqm
Bath	3sqm
Terrace 1	16 sqm
Terrace 2	7sqm



B102  
Two Bedroom Apartment - Type B

Footprint 129sqm

Living room & Dining	45sqm
Kitchenette	12sqm
Bedroom 1	13sqm
Bath	4sqm
Bedroom 2	23sqm
Bath	4sqm
Visitor's Toilet	5sqm
Maid's room	7sqm
Bath	4sqm
Terrace 1	7sqm
Terrace 2	5sqm



B103  
Two Bedroom Apartment - Type C

Footprint 136sqm

Living room & Dining	45sqm
Kitchenette	12sqm
Bedroom 1	13sqm
Bath	5sqm
Bedroom 2	20sqm
Bath	7sqm
Visitor's Toilet	4sqm
Maid's room	6sqm
Bath	4sqm
Terrace 1	13sqm
Terrace 2	7sqm



# Three Bedroom Apartment



A101  
Three Bedroom Apartment - Type A

Footprint 170sqm

Living room & Dining	54sqm	Maid's room	7sqm
Kitchen	12sqm	Bath	4sqm
Bedroom 1	15sqm	Bedroom 2	15sqm
Bath	4sqm	Bath	4sqm
Visitor's Toilet	4sqm	Bedroom 3	20sqm
Terrace	24sqm	Bath	7sqm



A102  
Three Bedroom Apartment - Type B

Footprint 157sqm

Living room & Dining	50sqm	Maid's room	7sqm
Kitchen	13sqm	Bath	4sqm
Bedroom 1	15sqm	Bedroom 2	15sqm
Bath	4sqm	Bath	4sqm
Visitor's Toilet	4sqm	Bedroom 3	18sqm
Terrace	16sqm	Bath	7sqm





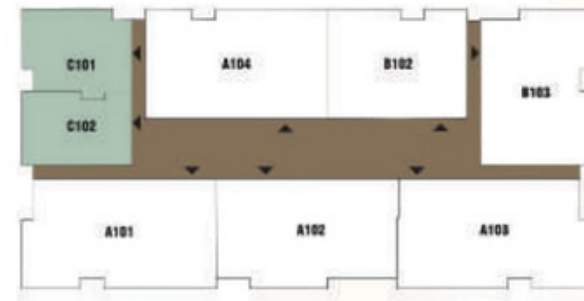


“

An outstanding opportunity, A&A Towers offers state of the art one bedroom, two bedroom, three bedroom apartments and four bedroom, five bedroom and six bedroom villas on the pent floor.



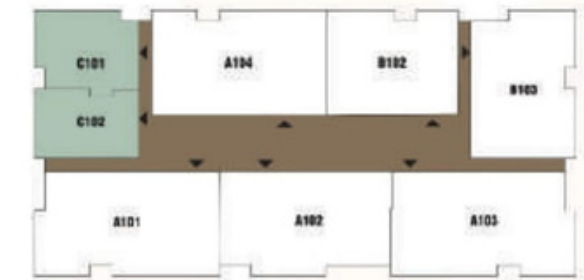
# One & Two Bedroom Apartment



**C101**  
One Bedroom Apartment - Type A

Footprint 73sqm

Living room & Kitchenette	32sqm
Bedroom	18sqm
Bath	4sqm
Visitor's Toilet	3sqm
Terrace	16sqm



**C102**  
One Bedroom Apartment - Type B

Footprint 65sqm

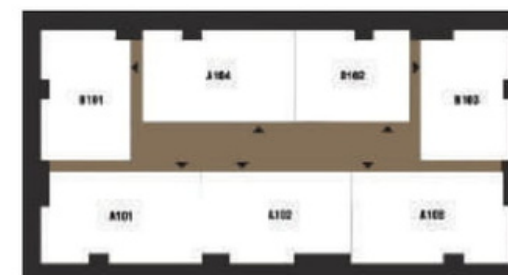
Living room & Kitchenette	32sqm
Bedroom	17sqm
Bath	5sqm
Visitor's Toilet	4sqm
Terrace	7sqm



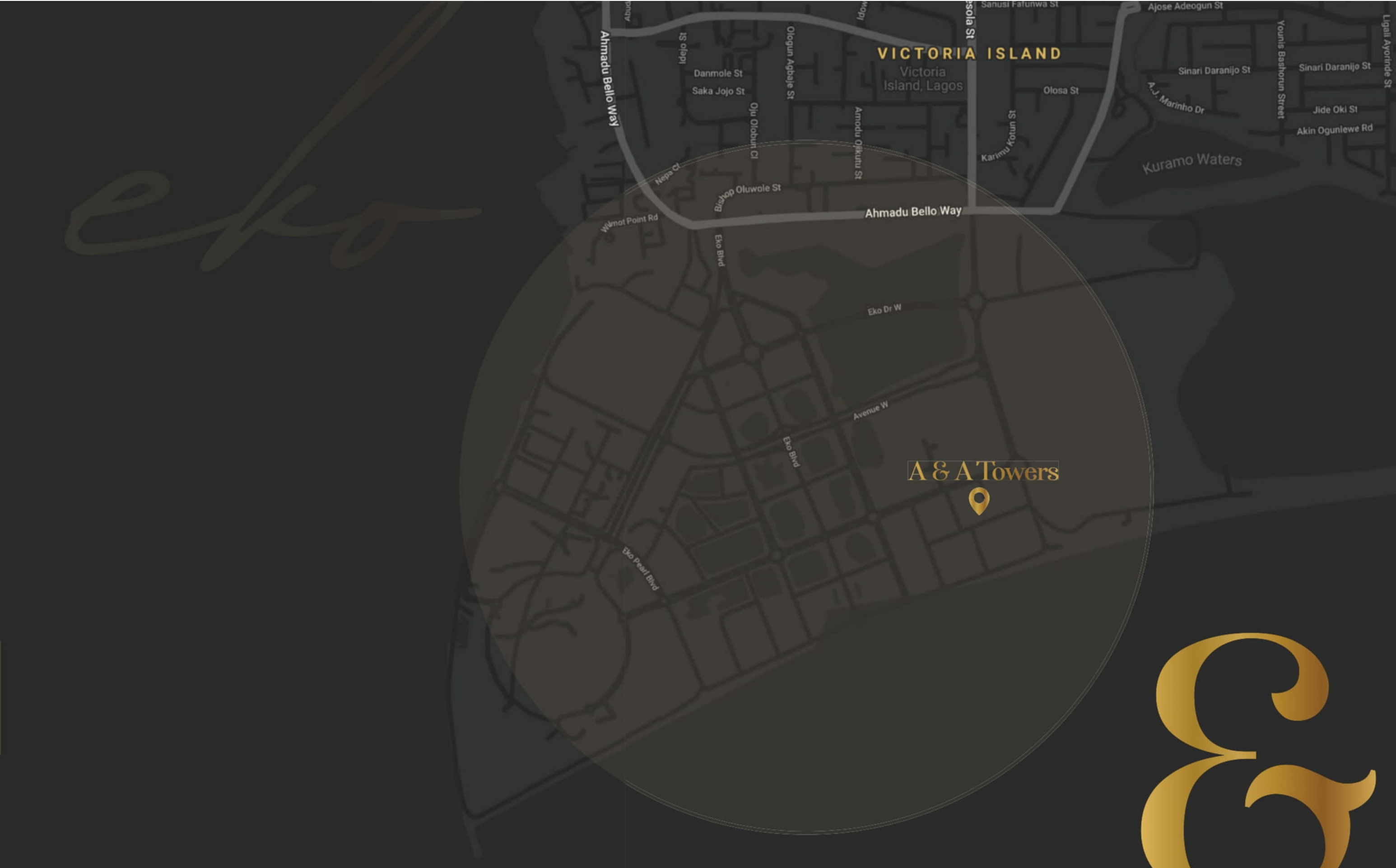




Typical Apartments Floor Plan







**VICTORIA ISLAND**

Victoria Island, Lagos

**A & A Towers**





